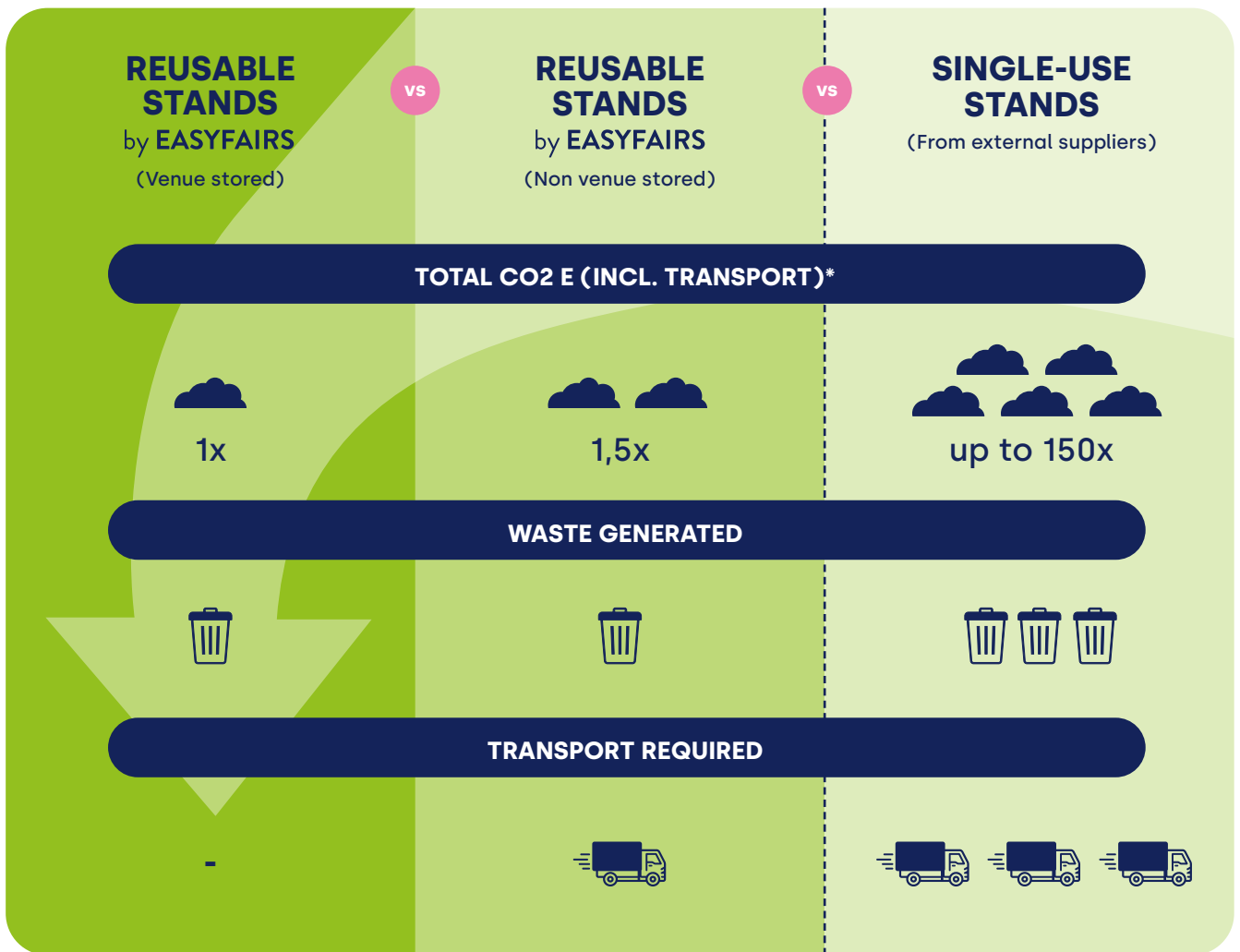




Cut your carbon footprint with our reusable stands

At Easyfairs, our priority is to "easify" your life by making your participation as an exhibitor frictionless, enjoyable, affordable and sustainable. That is why we provide high-quality, reusable modular stands that are ready for you to use with minimum hassle and maximum impact – and they also come with a much lower carbon footprint than a custom-built disposable stand from an external supplier.

Compare the impact of your stand choice:



* Your exact emission will depend on factors like stand design, materials used and transport requirements, which can vary by event location

Why Easyfairs stands produce lower emissions than single-use stands

Our modular stands are designed around three principles that reduce their environmental impact:

Reusable components

The stand structure is designed to be assembled and dismantled multiple times over several years. This means you don't need to purchase new materials for each event.



Recyclable materials

When materials can't be reused, they're recycled. Materials are chosen for recyclability at the end of their usable life.



Consolidated transport

When transport is needed, multiple stands are shipped together to reduce emissions per stand. At many events stands are even stored on-site, removing transport emissions entirely.



UP TO
150X
lower
carbon
footprint

compared to single-use stand solutions.

In comparison, single-use stands typically:

- Lack reusable components, as they are designed for just one event or for very limited use, resulting in more waste.
- Use materials that aren't selected for recyclability.
- Require their own transport, further increasing emissions.

How we calculate the numbers

Emissions data is based on a carbon calculator developed for Easyfairs by Climact, an independent expert in carbon footprint analysis. To compare Easyfairs' reusable stands and single-use custom-built alternatives, it uses identical parameters: stand size (16 square metres) and transport distance (400km; where applicable). The calculator measures emissions from material production and replacement (purchase), waste disposal and transport. Results vary depending on stand type, specific materials, design choices and country-specific conditions. The emissions reduction you'll see will depend on your circumstances.

READY TO MINIMISE YOUR ENVIRONMENTAL IMPACT?

Opt for Easyfairs stands!

Contact the event manager